

E. Barnes Ave.

8" W.M. (A.C.)

303

319

325

329

515

620

215

6" San.

6" San.

6" San.

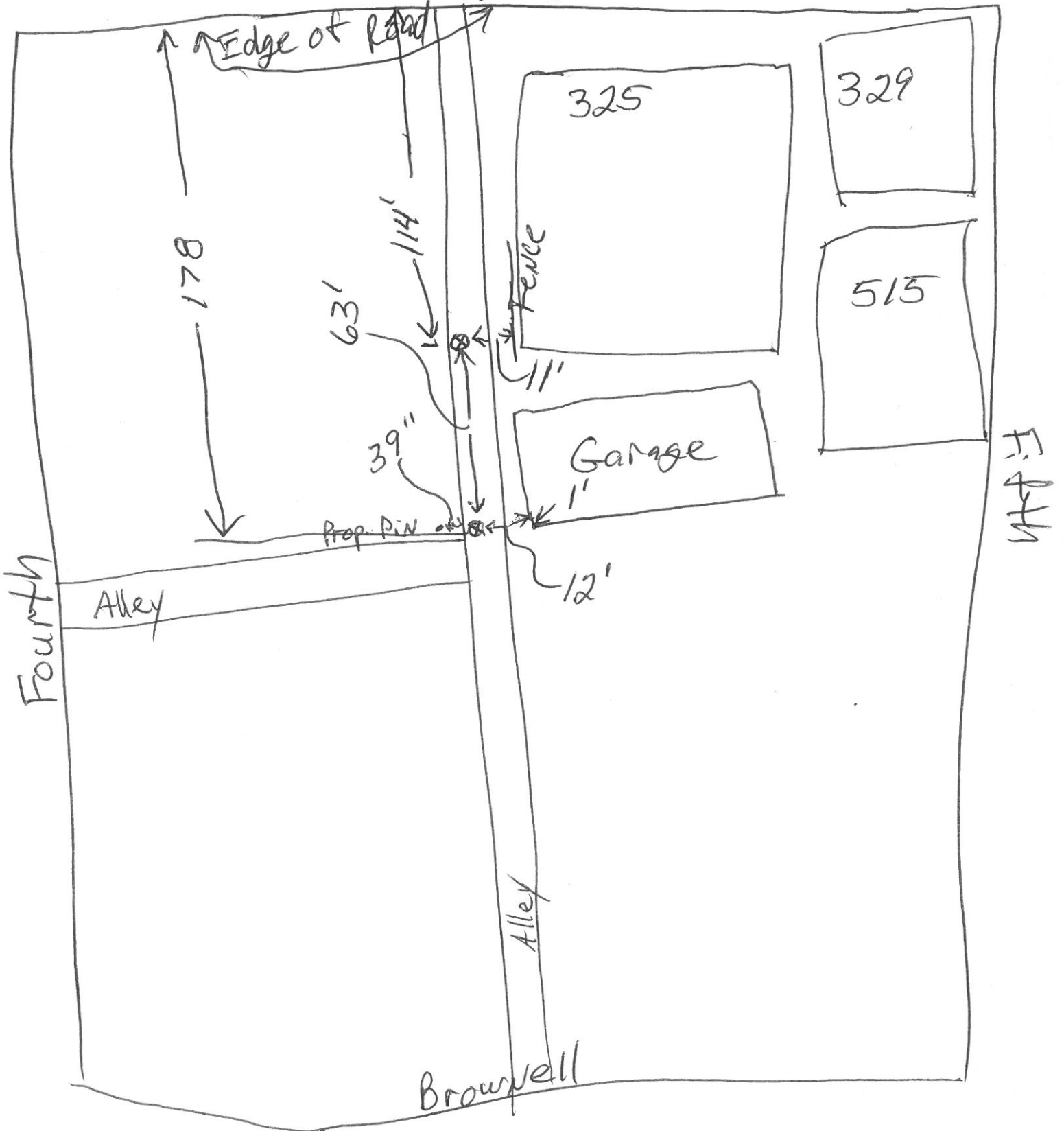
27" Str.

10" San.

W.M.



E Barnes



Edge of Road

178

63'

114'

39''

Prop. Pin

Fence

11'

Garage

1'

12'

325

329

515

Fifth

Fourth

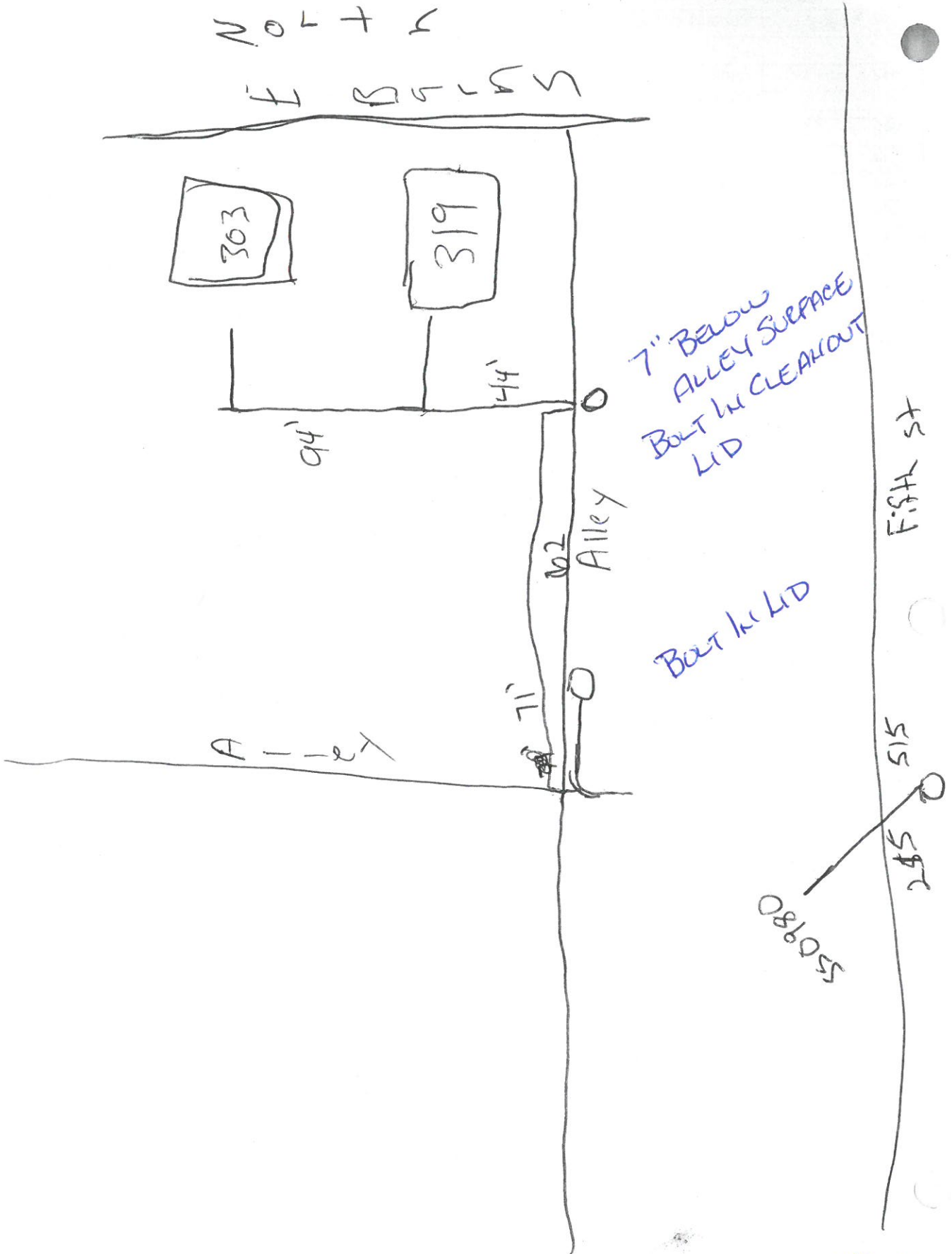
Alley

Alley

Browne

NORTH

FISH ST



7" BELOW ALLEY SURFACE
BOLT IN CLEAROUT
LID

BOLT IN LID

ALLEY

FISH ST

515

550980

NORTH

8-27-19 6" PVC
ROGER ELS